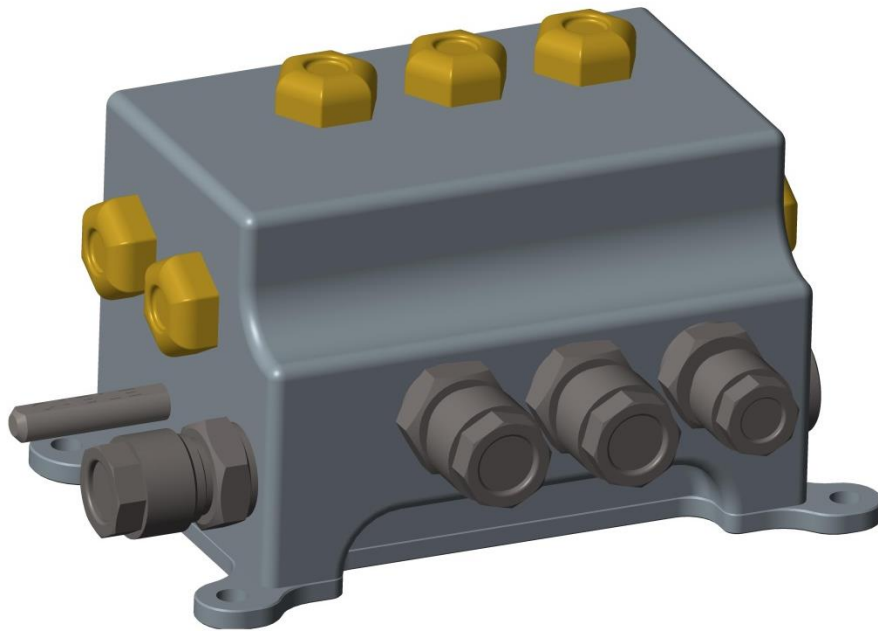


## 3 Way Valve Block



### Features

- Powered by MME Hypervelocity valves (Flow 900NI/min @ 8 bars)
- Very light
- Aircraft grade aluminium
- 2 input mounting options
- 3 outputs
- IP68 rated

## Technical specifications

Dimensions L x W x H	100 x 63 x 59 mm
Weight	480 g
Operating temperature	-20 ... 80°C
Operating pressure	6-8 bar
Voltage	12V

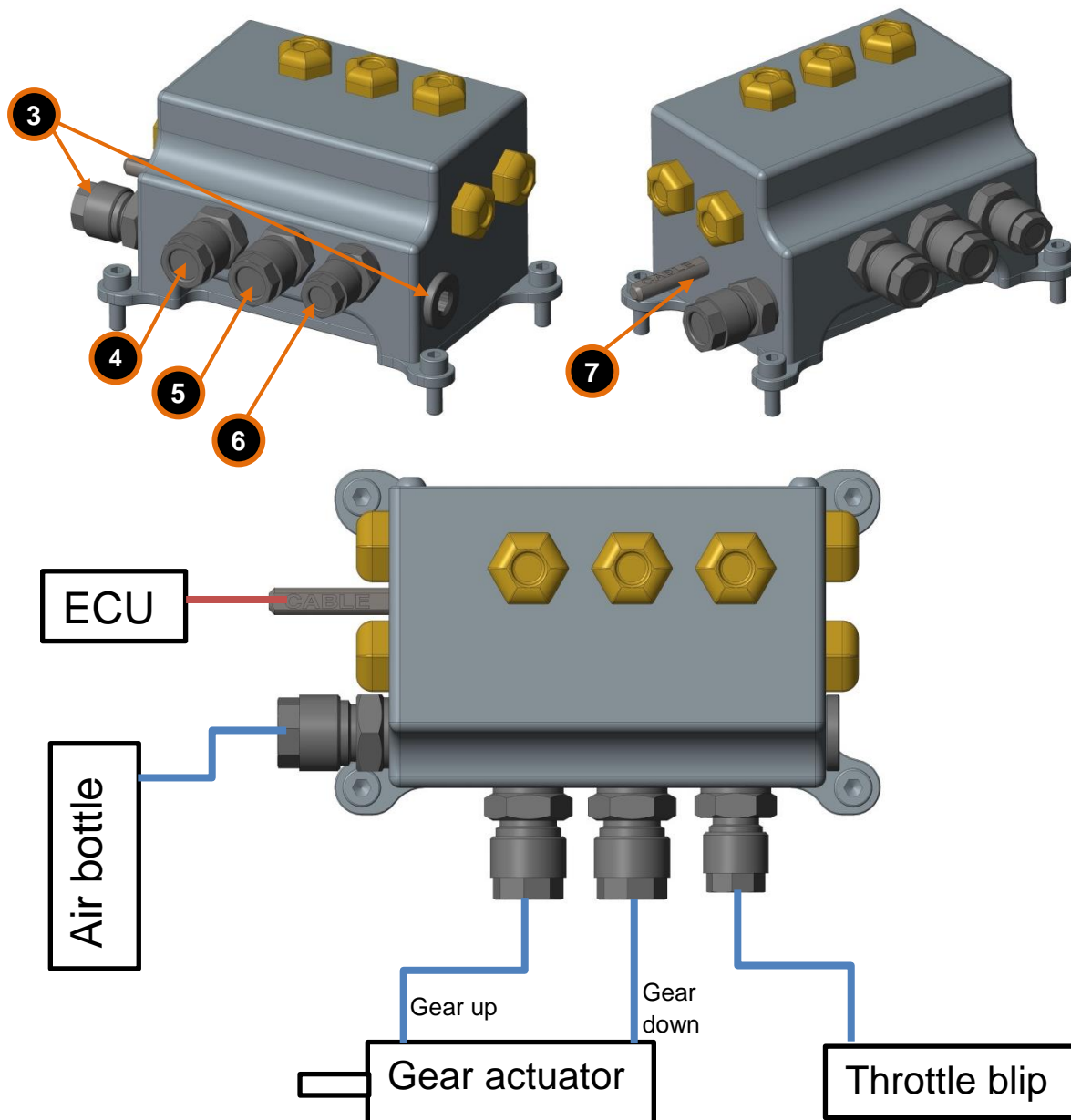
## Included in the kit

- ① Valve block
- ② Electric cable with connector (male and female) and pins



## Connection Diagram

- ③ Air supply (Ø8 mm pneumatic pipe). Swap the fitting and plug if needed.
- ④ Output (**gear up**) (Ø 8 mm pneumatic pipe) – keep the lines as short as possible (max 30cm from the actuator)
- ⑤ Output (**gear down**) (Ø 8 mm pneumatic pipe) - keep the lines as short as possible (max 30cm from the actuator)
- ⑥ Output to throttle blip (Ø 6 mm pneumatic pipe)
- ⑦ Electrical cable with connector

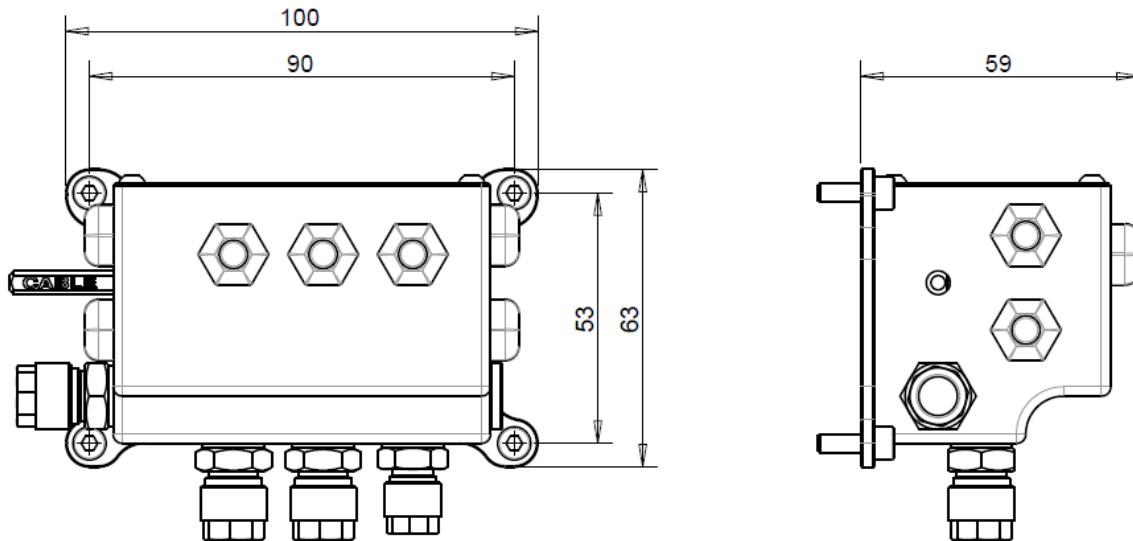


## Electrical diagram

Connector pinout

<b>1</b>	<b>12V</b>
<b>2</b>	<b>UP</b>
<b>3</b>	<b>DOWN</b>
<b>4</b>	<b>BLIP</b>

## Technical drawing



## Servicing

Yearly inspection (or monthly in dusty environment):

- Change silencer