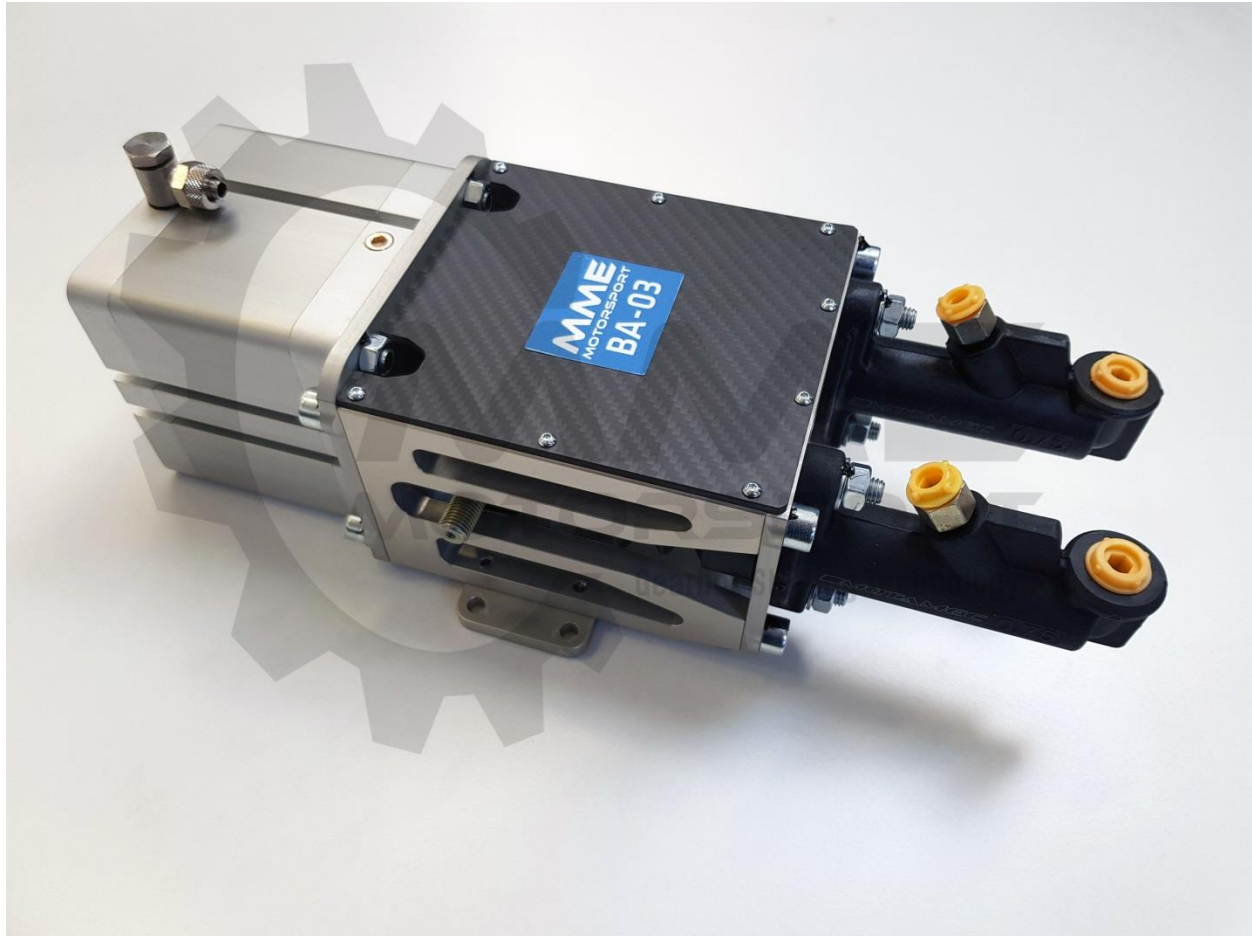


Brake Actuator



Features

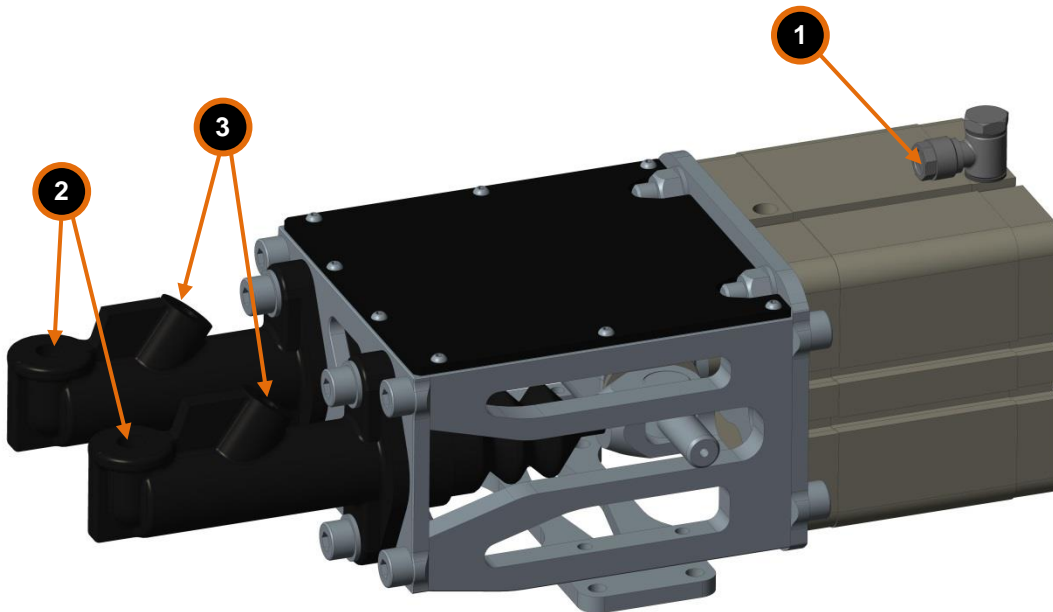
- Pneumatically operated dual brake actuator
- Adjustable balance bar
- Brake balance bar with anti-turn mechanism

Technical specifications

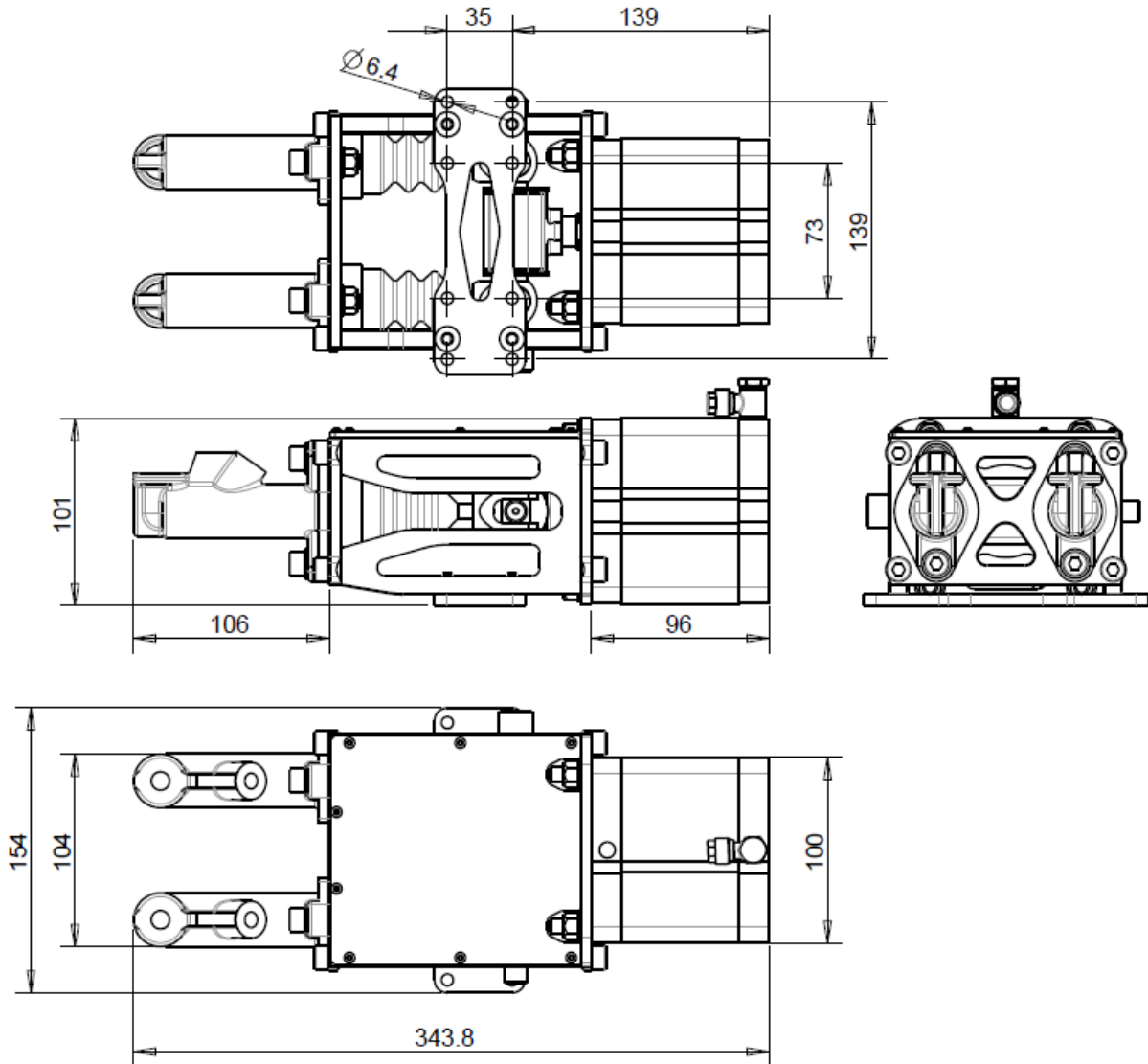
Dimensions L x W x H	343 x 154 x 101 mm
Weight	3,9 kg
Operating temperature	0 ... 90 °C
System Input pressure	0 ... 10 Bar
Max pneumatic force [8Bar]	4000 N
Master cylinder diameter	2 x 19mm (0.725")

Connection Diagram

- ① Pressure supply port (connected to the PBC-01 output port)
- ② Input port (7/16-20 - fitting not included)
If foot pedal is used, output from the foot master cylinder should be connected to this port.
If foot pedal is not used, this is a fluid reservoir port.
- ③ Output (3/8-24 - fitting not included)



Technical drawing



Servicing

If there's any damage to the rod at any time, we recommend replacing the actuator.

Yearly inspection:

- Disassemble the actuator
- Check for any damage to the inside or outside of the actuator
- With piston rod removed, clean the inside and outside of the actuator with gasoline (Do not use Nitroglycerin).
- Seals, bushing and internal cylinder bore should be lubricated with FESTO grease LUB-KB1-SILIKONFREI