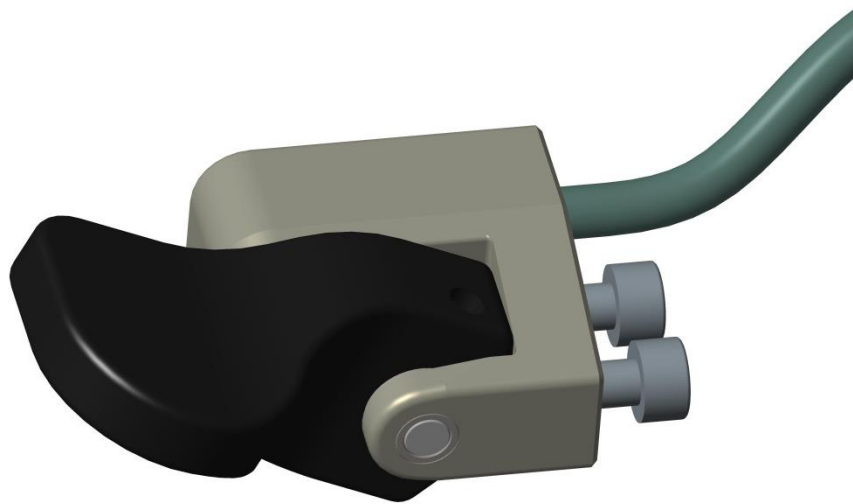


## Clutch paddle



### Features

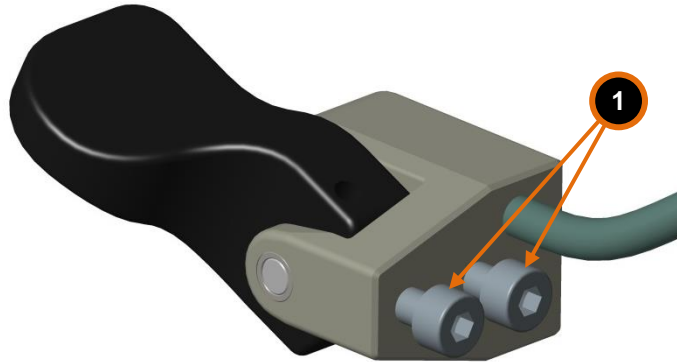
- Very light (only weights 80 g)
- Can be mounted individually to any steering wheel or shifting rod
- Aircraft grade aluminium
- Working voltage 0-5V
- IP68 rated

### Technical specifications

Dimensions L x W x H	52 x 40 x 20 mm
Weight	80 g
Operating temperature	-20 ... 80°C
Operating voltage	0 – 5V
Output voltage	0 – 5V

## Assembling

1. Mount your clutch paddle to steering wheel or shifting rod. Use bolts ① you received attached to the clutch paddle. Please refer to “General Service/Mounting Rules”.



## Wiring diagram

Brown wire – 5V  
Black wire – Output  
Blue wire – GND

## Technical drawing

