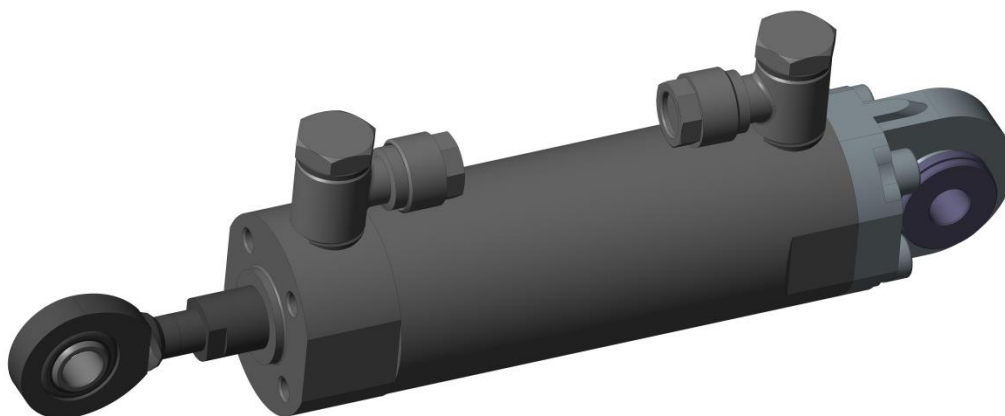


Universal Gearbox Actuator With Accessories



Features

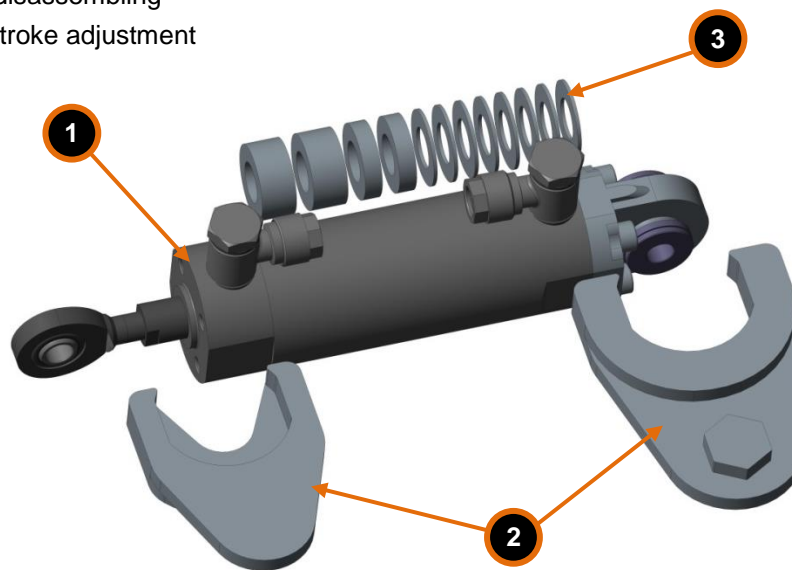
- Standard Two Way Actuator (max +25mm / - 25mm)
- Fully adjustable (washers included in the kit). Stroke adjustable from 12 to 50 mm
- Very compact (only 173mm + stroke)
- Very light (only weights 450 g)
- 650N push and 560N pull force @ 8 bar

Technical specifications

| | | |
|-------------------------|-----------------------------|-------|
| Dimensions L x W x H | 201 x 38 x 59 mm | |
| Weight | 450 g | |
| Operating temperature | -20 ... 80°C | |
| Operating pressure | 6 ... 9 Bar | |
| Stroke | adjustable from 12 to 50 mm | |
| Operating force [8 Bar] | Push | |
| | Pull | 650 N |
| Pneumatic fitting | Pneumatic tube 8/6 mm | 560 N |

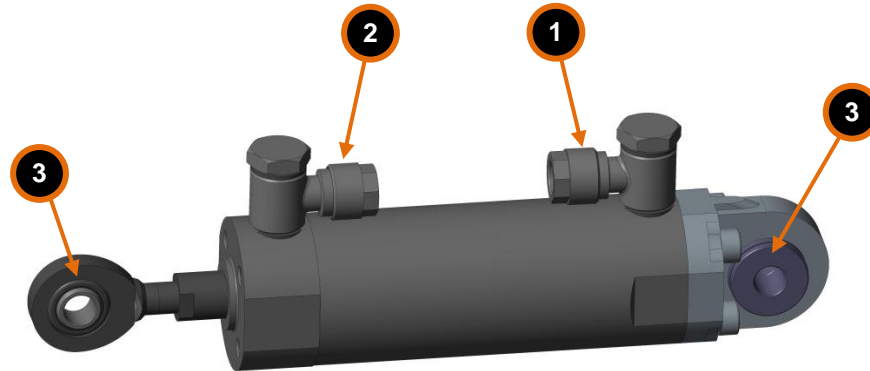
Included in the kit

- ① Gearbox actuator
- ② Two keys for disassembling
- ③ Washers for stroke adjustment



Connection Diagram

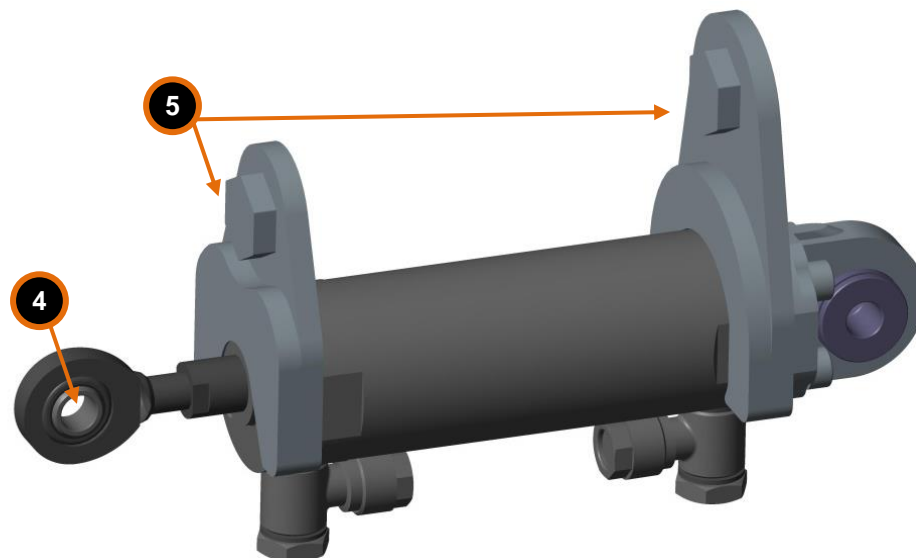
- ① Gear actuator **PUSH** (Ø 8 mm pneumatic pipe)
- ② Gear actuator **PULL** (Ø 8 mm pneumatic pipe)
- ③ Ø 8 mm rod end



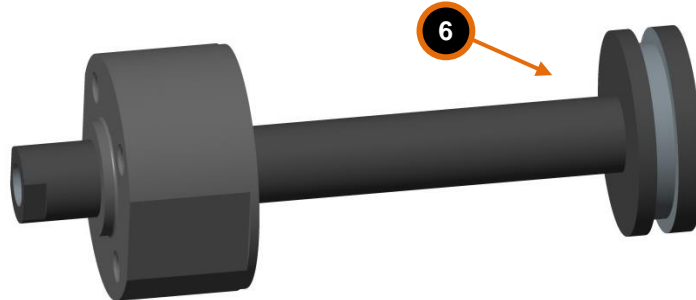
Adjusting the travel

Travel is adjusted by adding or removing washers inside the cylinder. Cylinder has 50 mm stroke without washers (+25mm / - 25mm), by adding 10mm washer you reduce stroke to 40 mm.

1. Unscrew the cover from cylinder using two keys ⑤. Use designated 17mm bolts to tighten/untighten. Please note that there's different key for front and back.

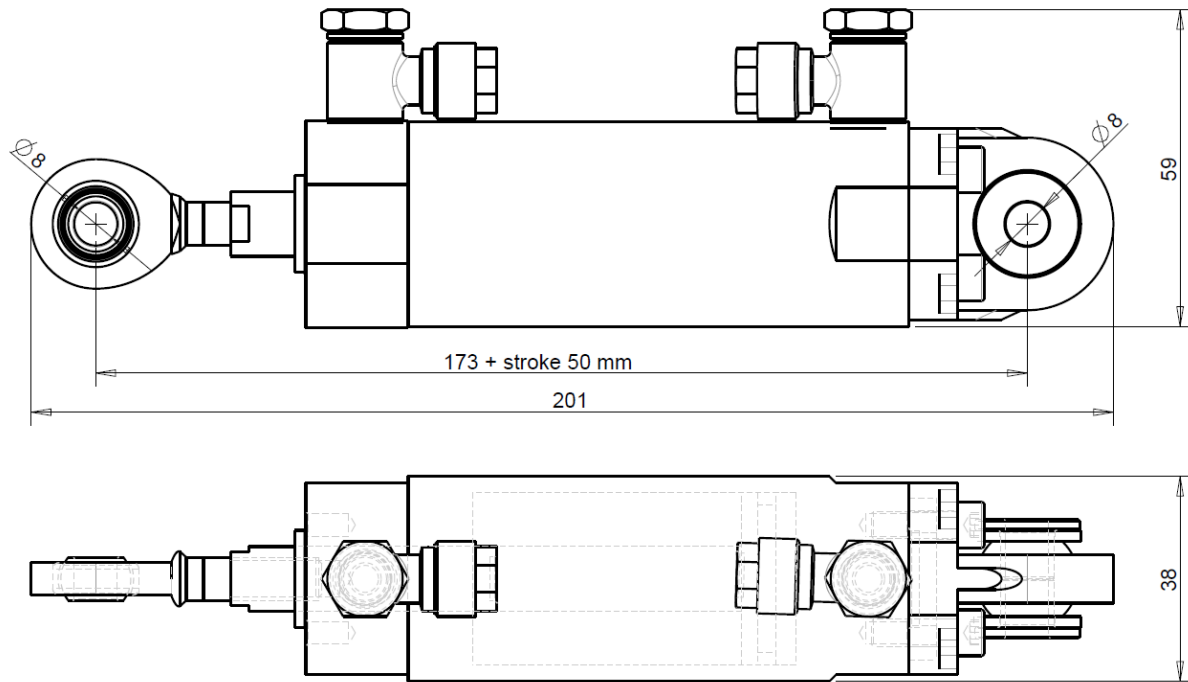


- Remove the rod end ④ from the piston rod and pull out the piston rod from the cover. Insert or remove the washers ⑥ from the piston rod and insert the piston rod back to the cover.



- Insert the piston with the cover back to the actuator and screw the cover back in place. **When both ends are fully tightened, centers of the pneumatic fittings must be horizontally aligned.** Be careful about the sealing when removing or assembling the actuator. Check lubrication when assembling the actuator (see servicing below).

Technical drawing



Servicing

If there's any damage to the rod at any time, actuator must be replaced.

Yearly inspection:

- Disassemble the actuator
- Check for any damage to the inside or outside of the actuator
- With piston rod removed, clean the inside and outside of the actuator with gasoline (Do not use Nitroglycerin).
- Seals, bushing and internal cylinder bore should be lubricated with FESTO grease LUB-KB1-SILIKONFREI.