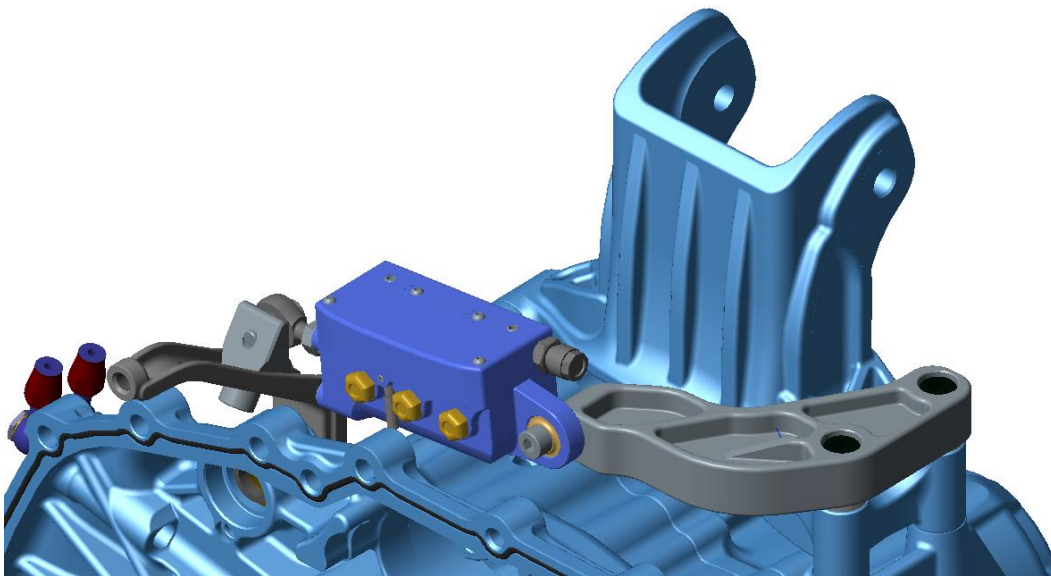
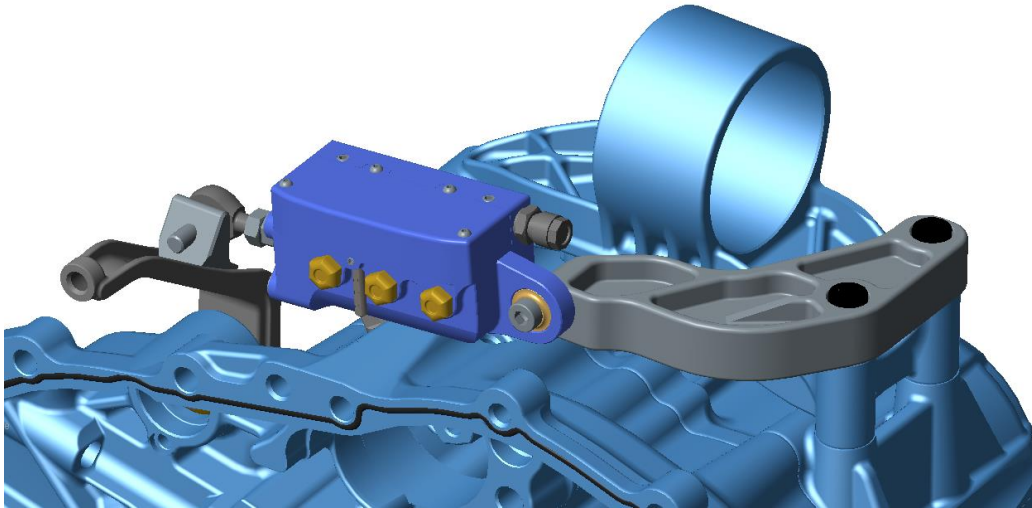


X-Shift EVO9-X Mounting Kit



Features

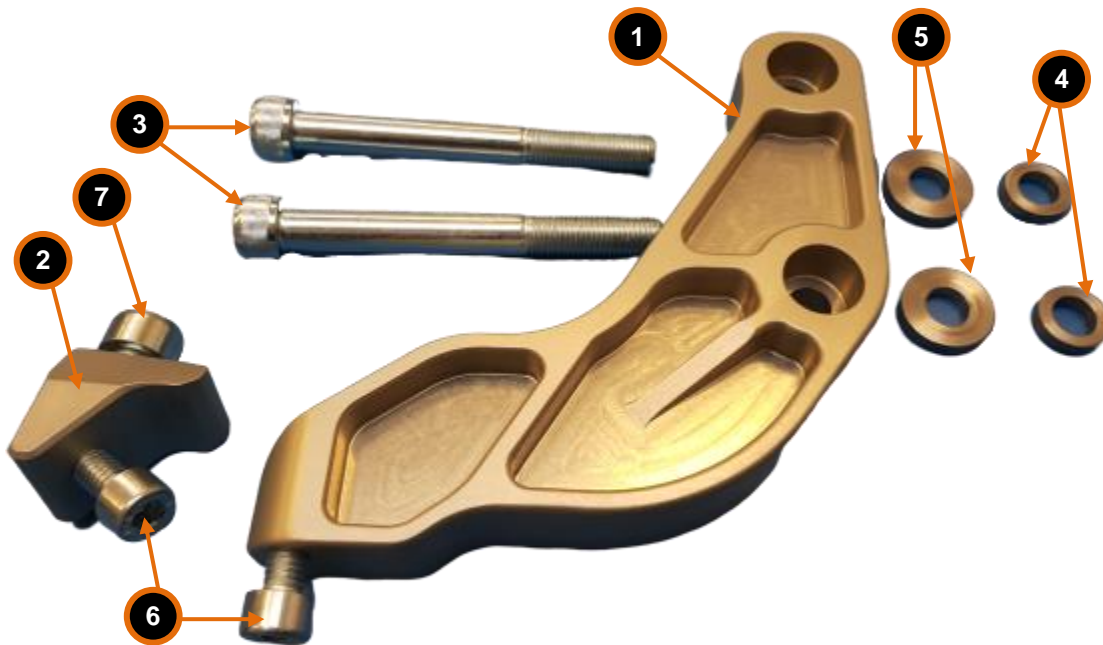
- Suitable for X Shift Mitsubishi lancer EVO9 and X sequential gearboxes.
- Very light
- Aircraft grade aluminium

Technical specifications

Dimensions L x W x H	130 x 135 x 25 mm
Weight	490 g
Operating temperature	-20 ... 80°C

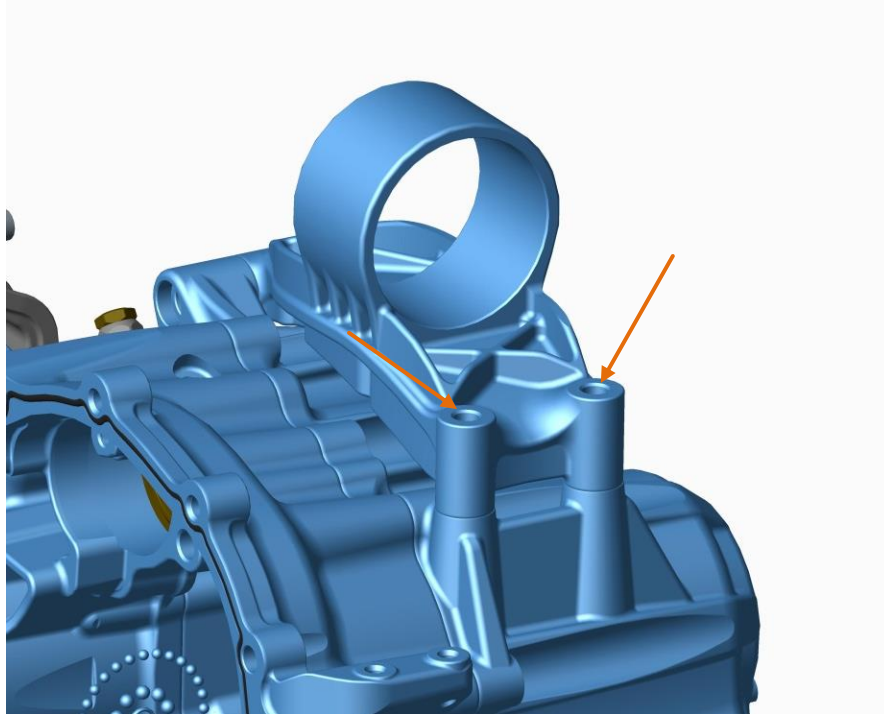
Included in the kit

- ① Aluminum holder
- ② Aluminum holder for shifting arm
- ③ Two bolts M10x1,25 length 90mm
- ④ Two stainless steel washers for EVO 9 gearbox
- ⑤ Two stainless steel washers for EVO X gearbox
- ⑥ Two bolts M8 length 25 mm
- ⑦ Bolts M10 length 16 mm

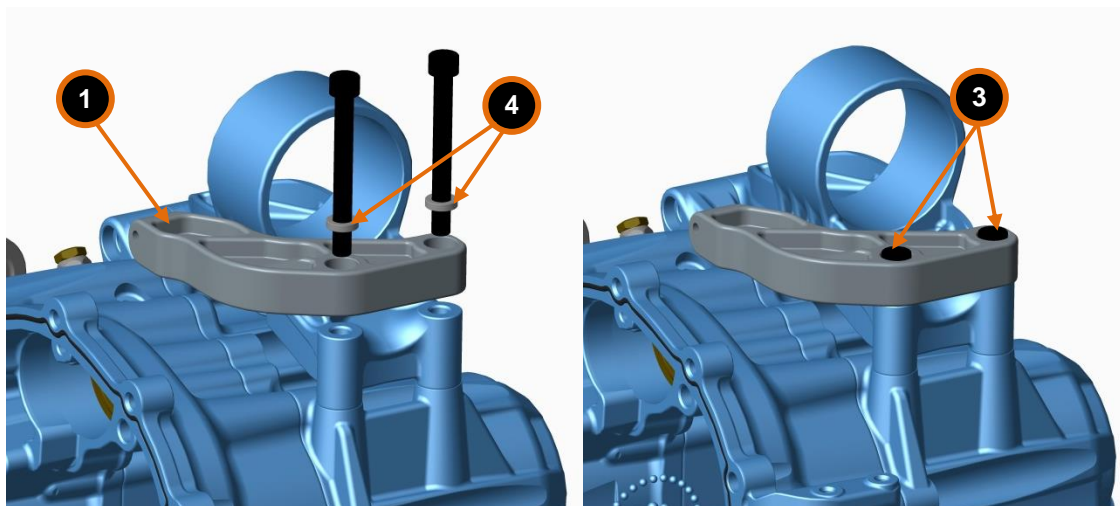


Assembling

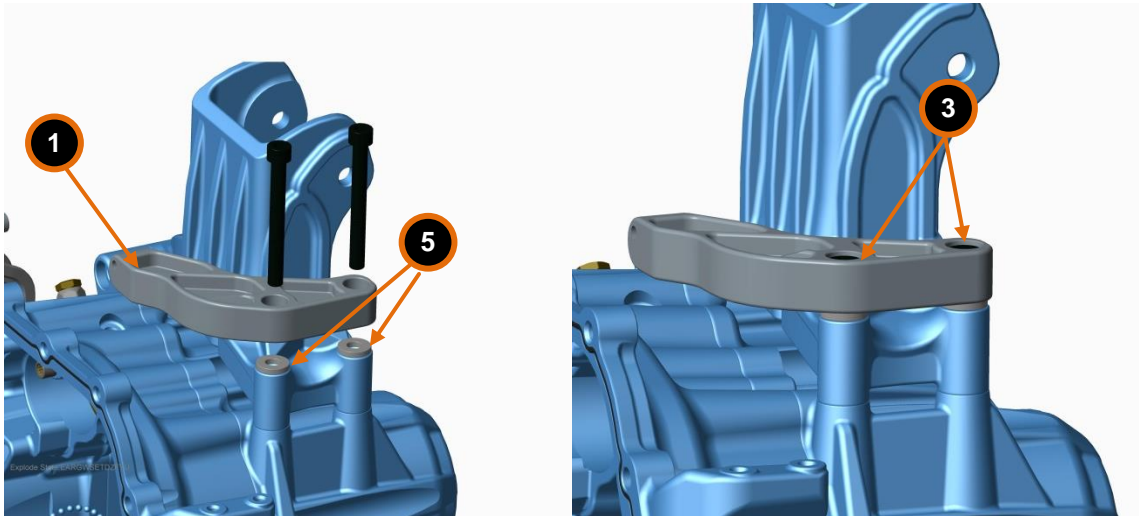
1. Remove two original bolts from side gearbox holder.



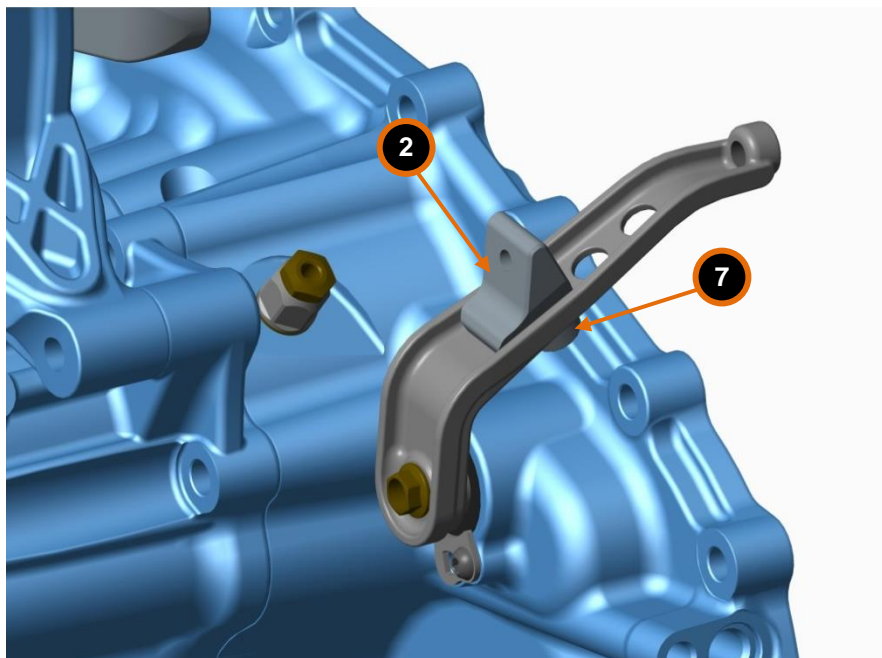
2. For EVO 9 mount actuator holder ①. Under the bolts insert washer ④. Use two bolts M10x1,25 length 90 mm ③.



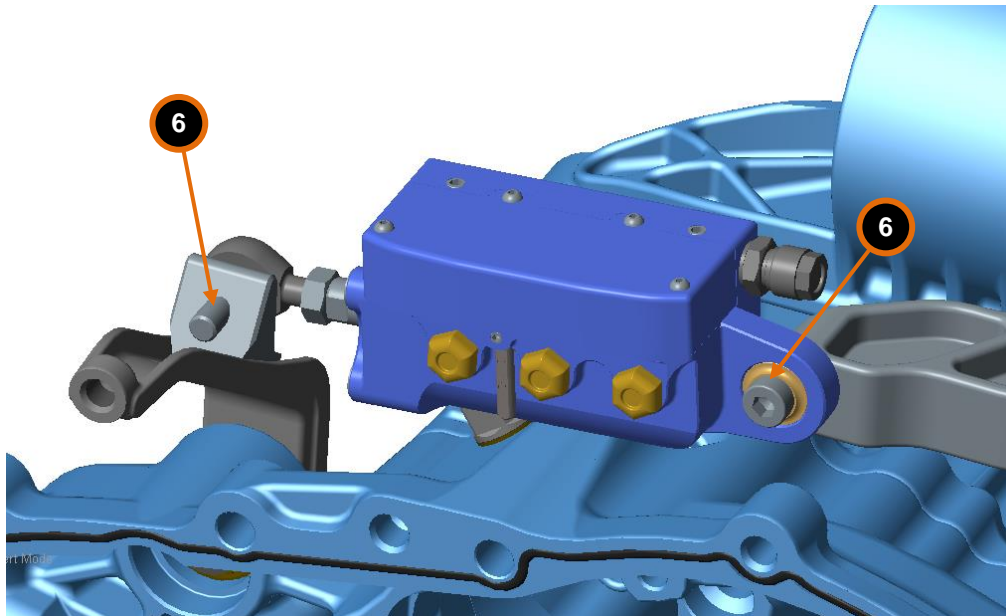
For EVO X mount actuator holder ①. Under holder insert washer ⑤. Use two bolts M10x1,25 length 90 mm ③.



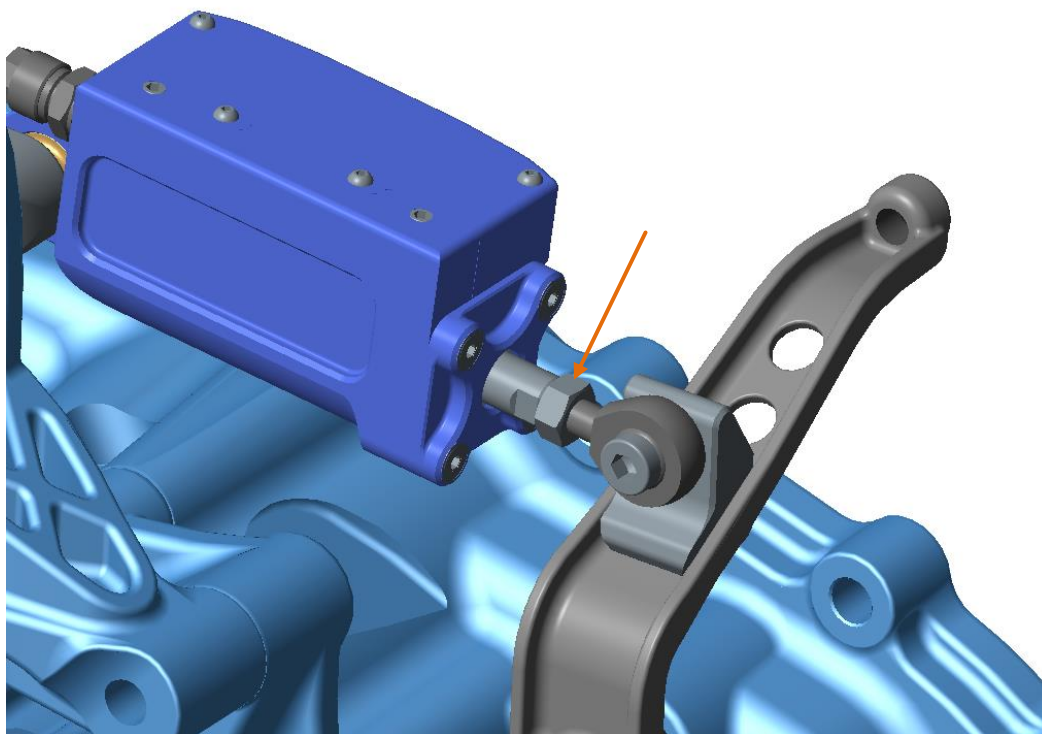
3. Mount the holder ② on the shifting arm. Use bolt M10 length 16mm ⑦, and bolt it from the bottom.



4. Mount the actuator. Use two M8 bolts length 25mm ⑥.



5. Check the stroke of the actuator. Stroke of actuator must be adjusted to 23mm (spacer attached, see manuals for actuator) Set the middle position of the shifting arm by adjusting the rod end.



6. Connect the air-line and wiring.