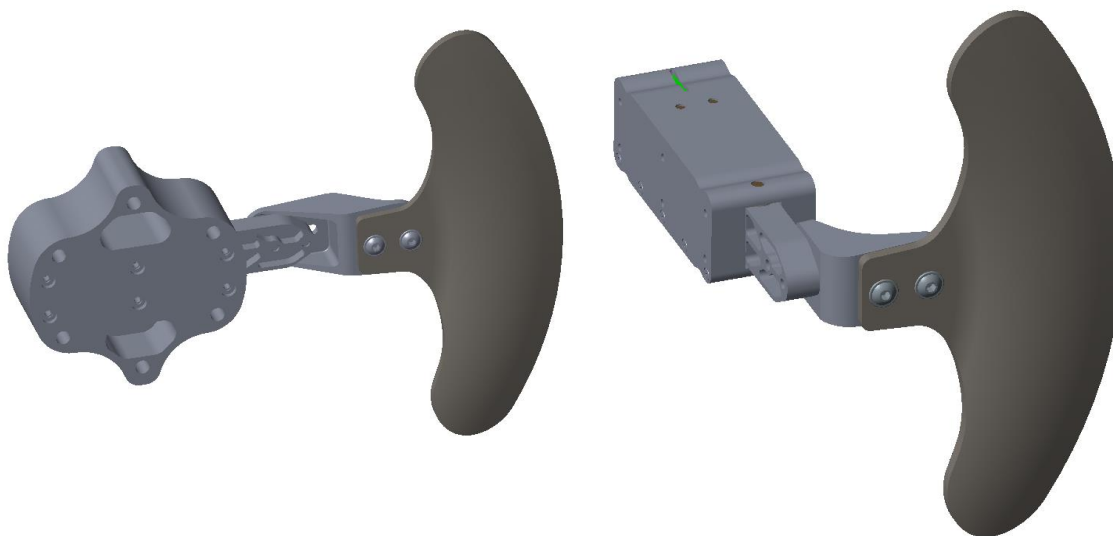


## Single Shift Paddle WRC Style



### Features

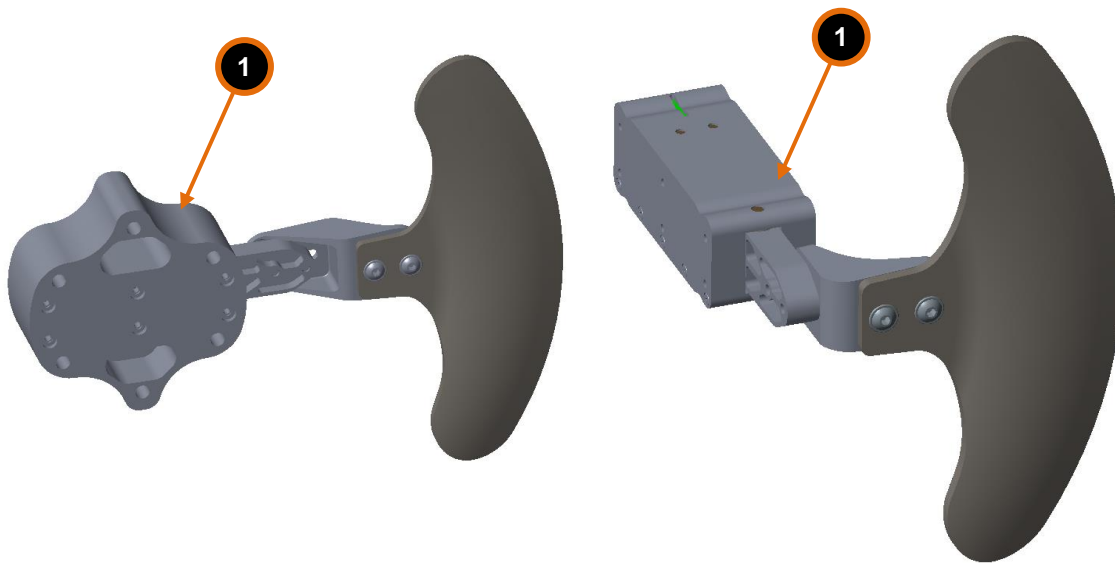
- WRC style (push/pull)
- Very light (210g for straight and 370g for 90 degree)
- Magnetically assisted
- Can be mounted individually to any steering wheel
- Aircraft grade aluminium and carbon
- IP68 rated

## Technical specifications

	SP-05-STR	SP-05-90DEG
Dimensions L x W x H	210 x 170 x 55 mm	135 x 170 x 110 mm
Weight SP-05-STR	370 g	210 g
Operating temperature	-20 ... 80°C	-20 ... 80°C

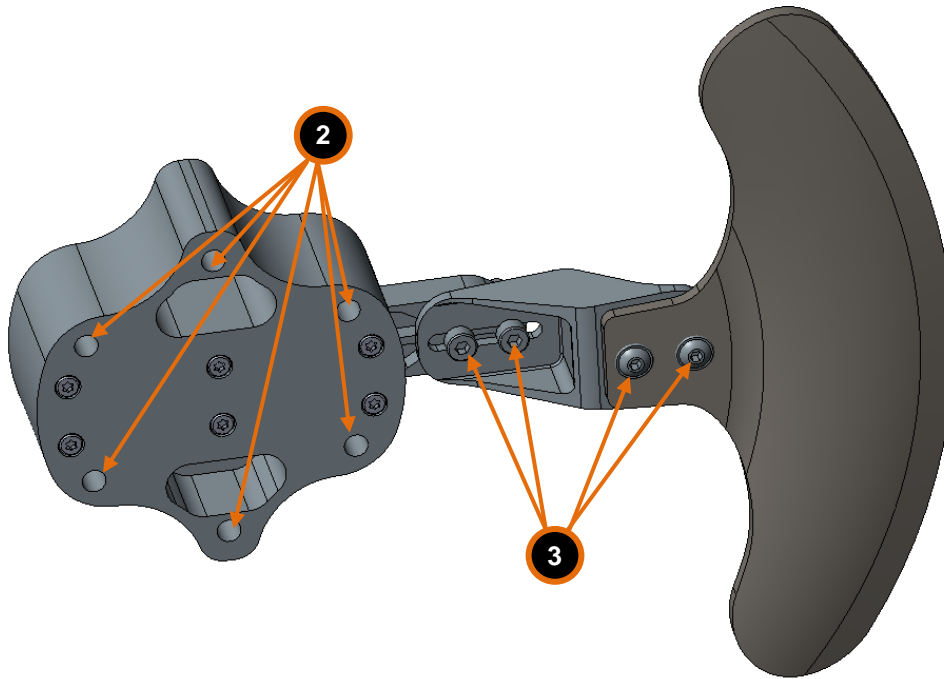
## Included in the kit

- ① Single shift paddle

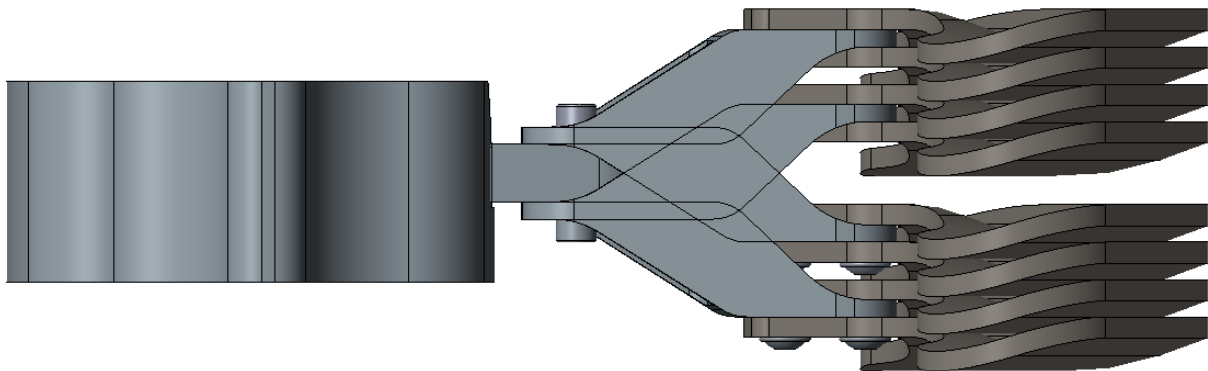


## Assembling SP-05-STR

SP-05-STR paddle was designed to be mounted directly to steering wheel. Paddle will rotate with the steering wheel. Mounting holes ② for mounting to the steering wheel are with 6 x 70mm pattern.

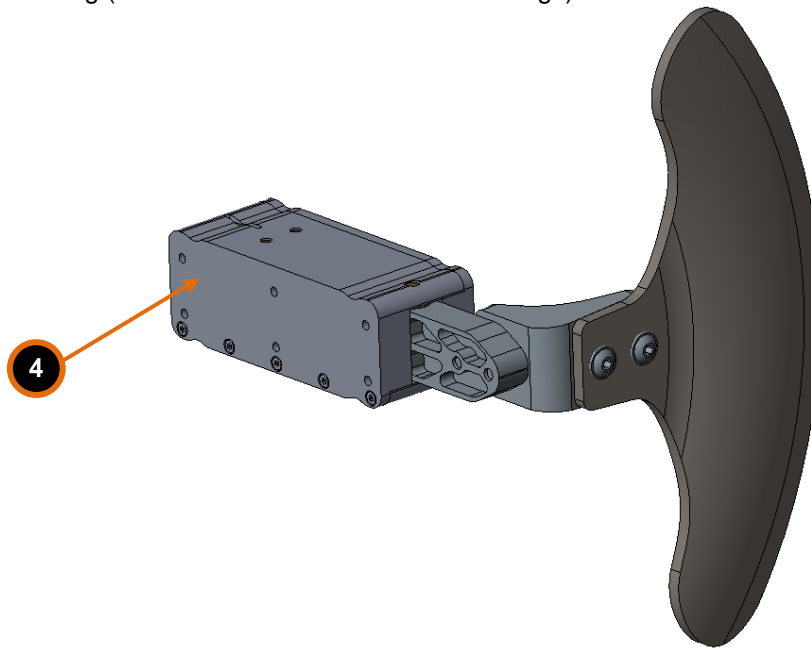


Position of the paddle can be adjusted. Untighten bolts ③ that hold paddle and bracket in place. There are 8 different possible positions:

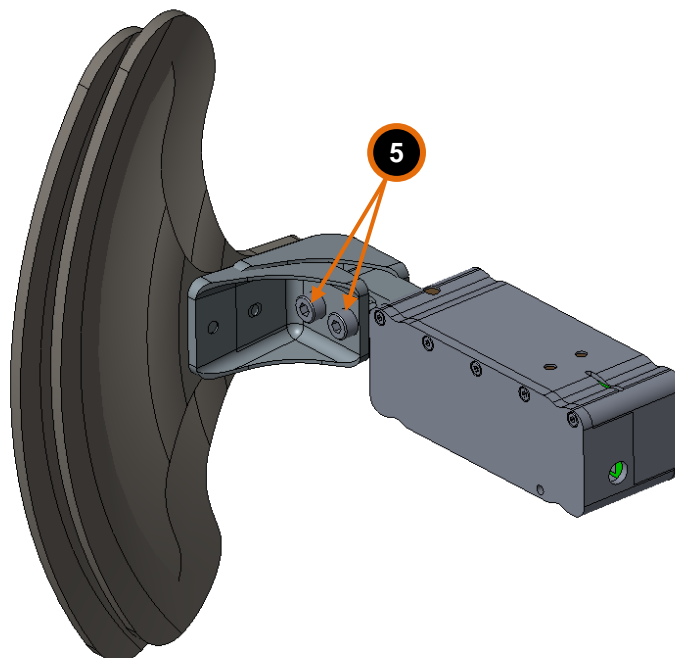


## Assembling SP-05-90DEG

SP-05-90DEG is designed to be mounted to the side of the steering wheel. Mounting surface ④ with holes for mounting (for dimensions see technical drawings).



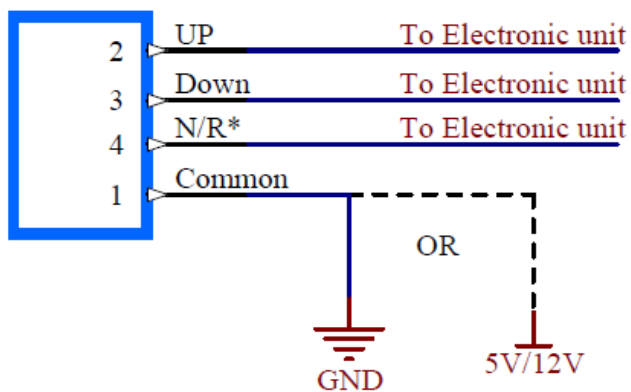
Position of the paddle can be adjusted. Untighten bolts ⑤ that hold paddle and bracket in place. There are 2 different possible positions:



## Wiring diagram

Connector at SP-03: AT06-4S (female)

Mates with Amphenol AT06-4P (male). Mating male pins: AT60-20-0122

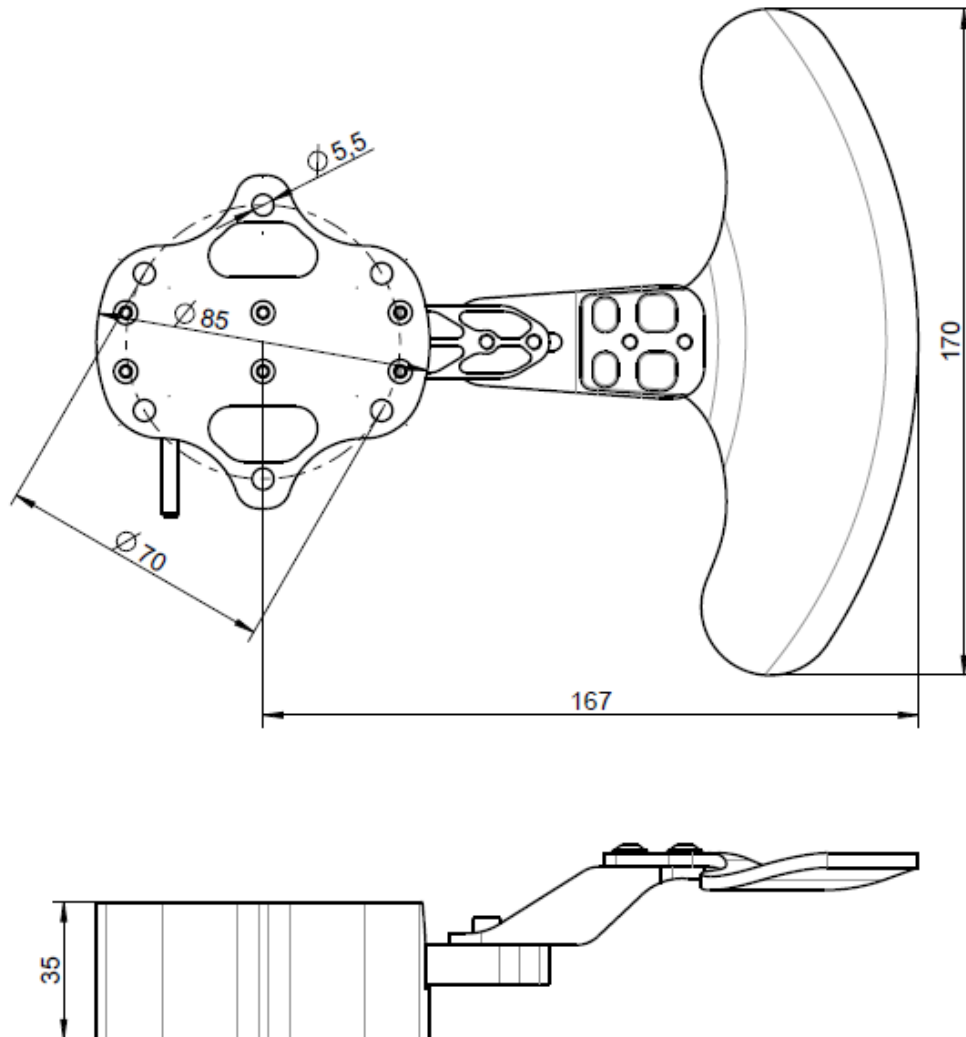


Notes:

N/R\* stands for Neutral/Reverse, but it can be used for any purpose

## Technical drawing

SP-05-STR



## SP-05-90DEG

