

Gear Lever Kit For Quaife Gearboxes

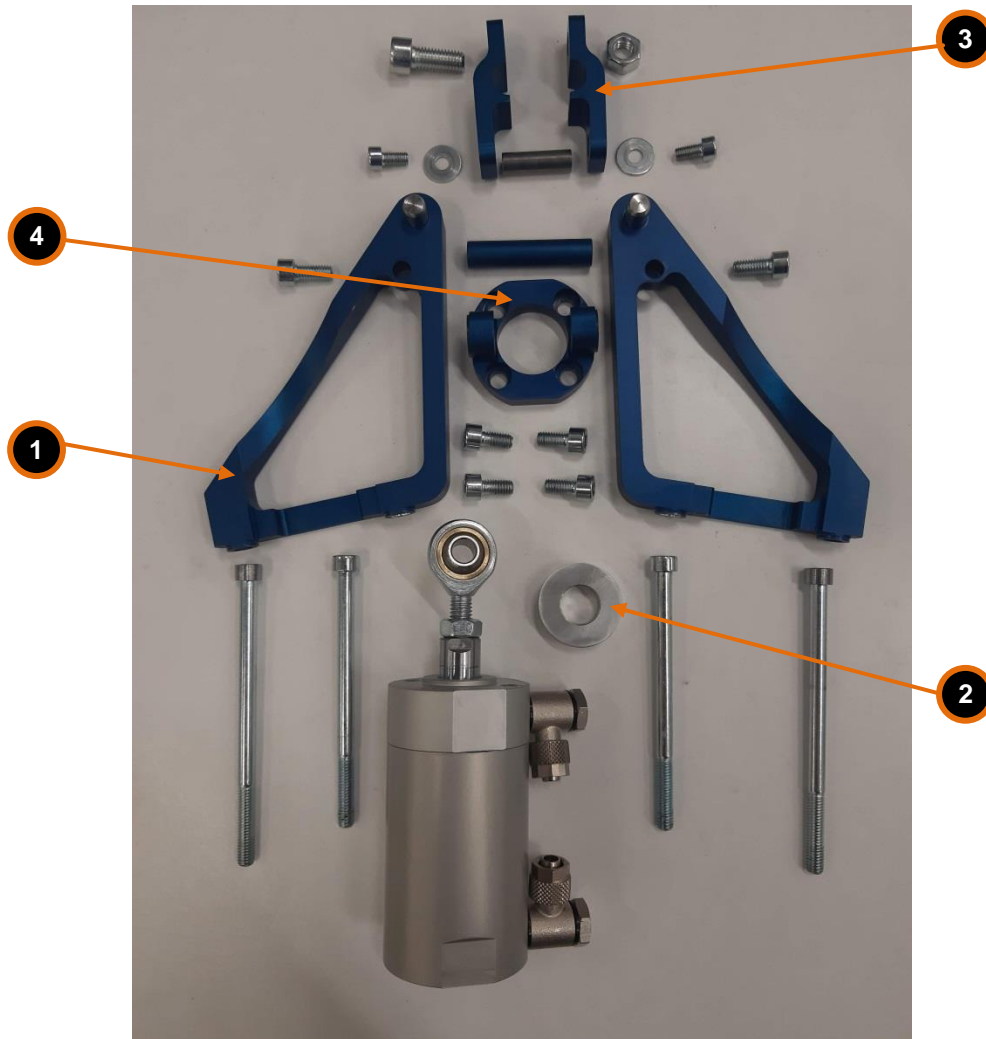


Features

- Easy to assemble
- No extra work required on gearbox
- Adjustable actuator travel
- For Quaife gearboxes QBE60G, QBE69G, QBE89G; equipped with short or long straight gear lever QGE60F011

Included in the kit

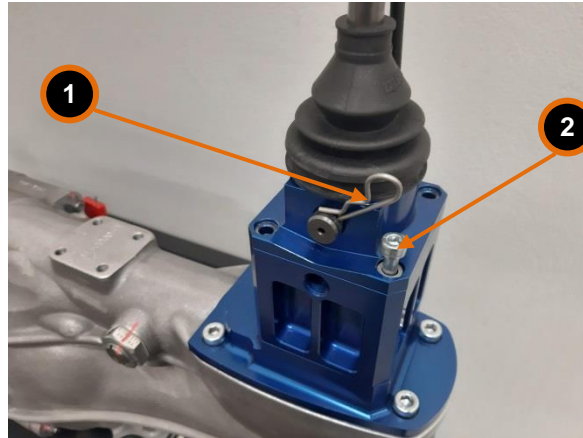
- ① Gear actuator bracket with bolts
- ② Space washers for gear actuator bracket
- ③ Gear lever clamp with nuts and bolts
- ④ Gear actuator mount with bolts



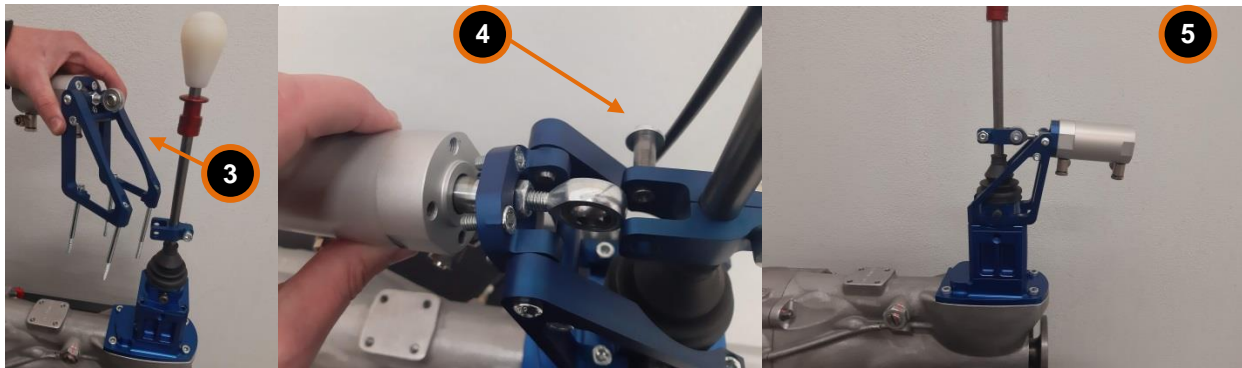
Mounting instructions

! Before mounting please read general mounting instructions!

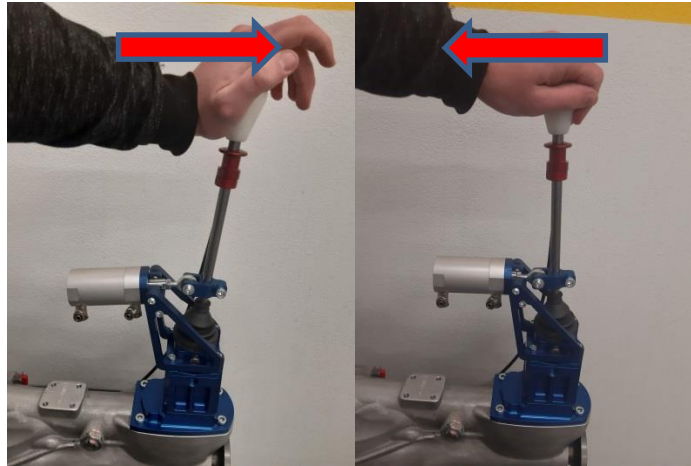
1. Remove safety pin.
2. Remove mounting bolts.



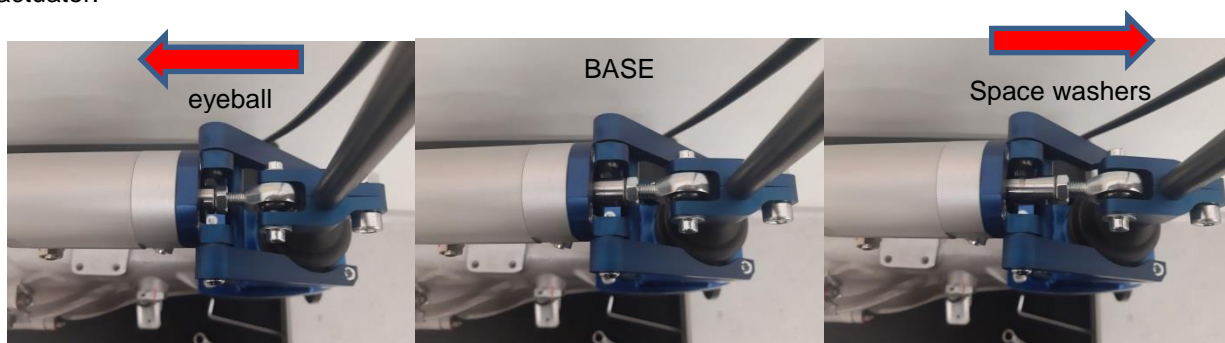
1. ③ Assemble the actuator bracket fully (assembly video <https://youtu.be/SekDYuoKAIE>), ④ and put the clamp on the gear lever, connect gear actuator with the clamp. ⑤ Bracket with actuator can be mount on either side.



⑥ Push and pull the lever to change gear. Align the gear lever adapter with gear actuator. Gearbox should shift the gear but also the cylinder should come to end stroke before gear lever is.



⑦ Adjust the stroke travel by screwing the eyeball or adding/removing space washers in the gear actuator.

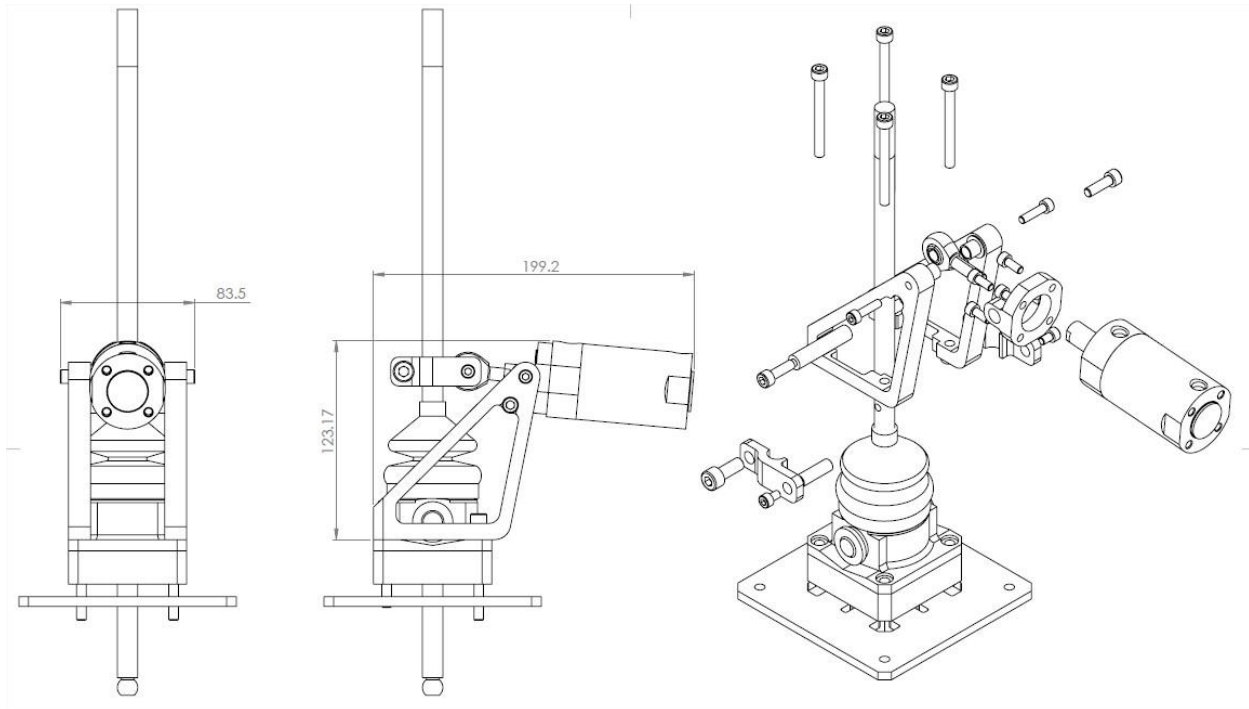


⑧ Remove only the gear actuator to adjust the stroke travel. Remember that gearbox should shift the gear but also the cylinder should come to end stroke before gear lever is! (see GA-02, manuals)



Mount back the gear actuator, connect gear actuator with pneumatic piping and electric wiring and then you are all done!





Servicing

- After few hours of use check all the bolts and screws and tighten them if necessary.
- Bolts and screws should be regular inspected.
- For servicing the gear actuator please see GA-02 or GA-03 (04) manual.