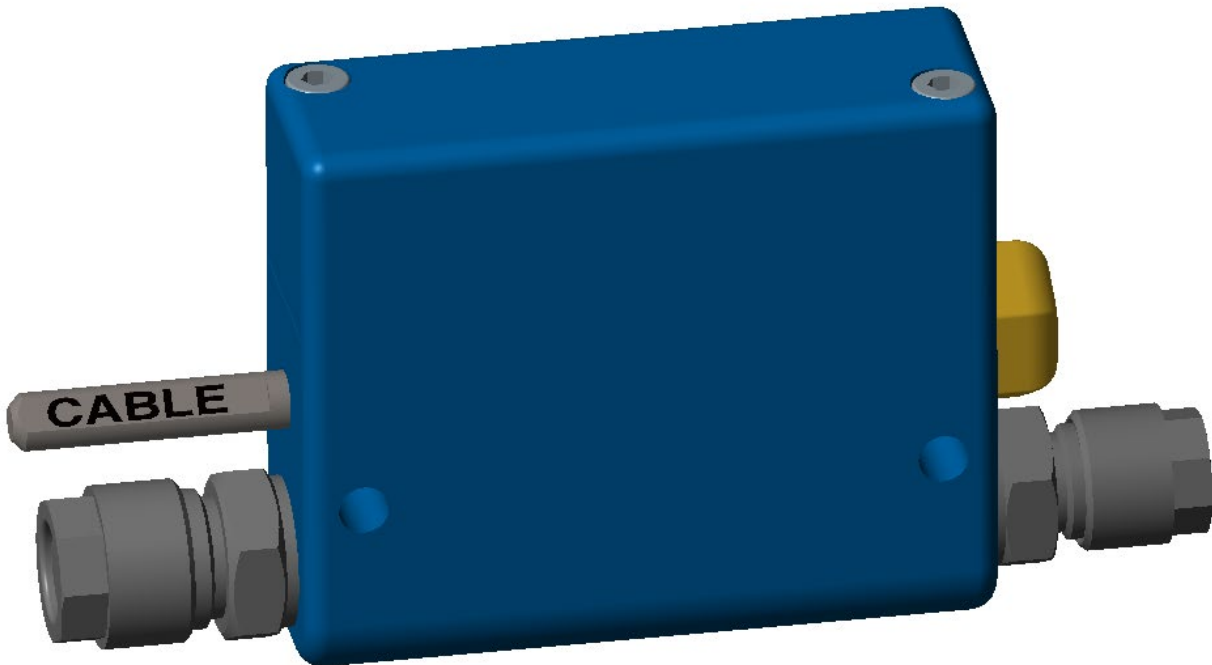


Throttle Blip Valve Block



Features

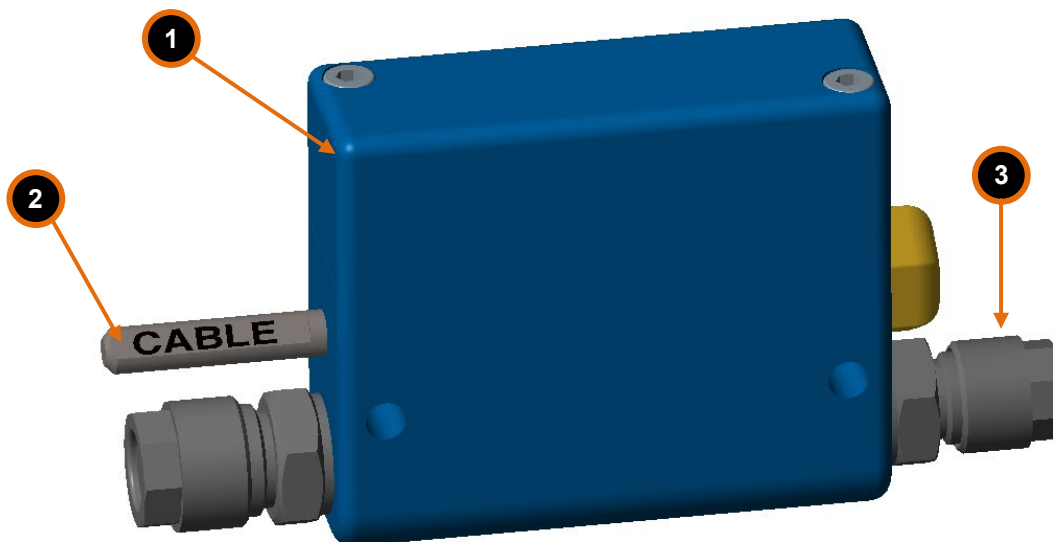
- Very light and small
- Aircraft grade aluminium
- 1 output
- IP68 rated

Technical specifications

Dimensions L x W x H	60 x 20 x 51 mm
Weight	150 g
Operating temperature	-20 ... 80°C
Operating pressure	6-8 bar
Voltage	12V

Included in the kit

- ① Valve block
- ② Electric cable with connector (male and female)
- ③ Output fitting for 8/6 mm and 6/4 mm pneumatic pipes.



Connection Diagram

- ③ Air supply (Ø 8 mm pneumatic pipe).
- ④ Output (Ø 8 or Ø 6 mm pneumatic pipe)
- ⑤ Electrical cable with connector (male and female)
- ⑥ Silencer

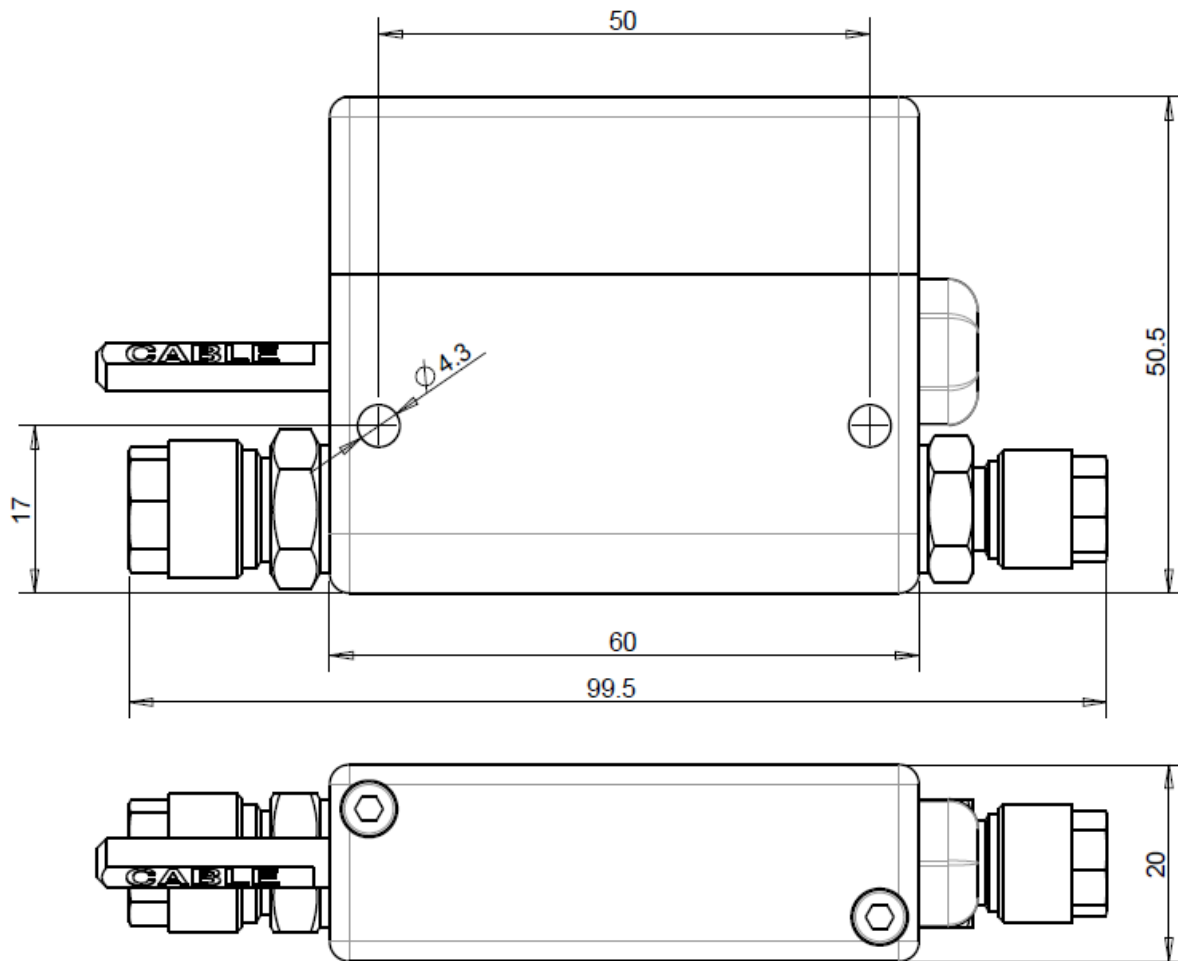


Electrical diagram

Connector pinout

1	12V
2	BLIP

Technical drawing



Servicing

Replace silencer on the valve once a year.